

Kaimai Mamaku Restoration Project:

Restoring the Mauri of the Kaimai Mamaku





Welcome and Introduction

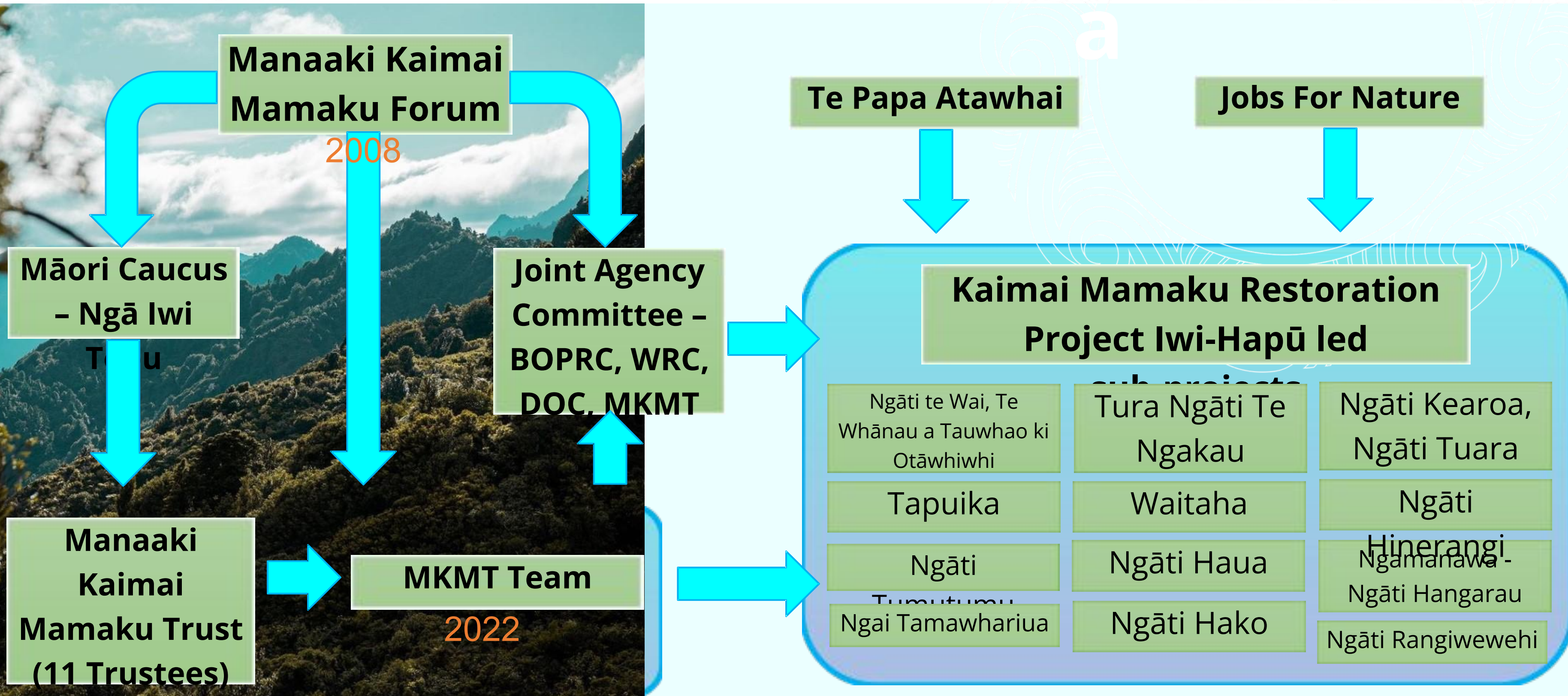




Towards A Thriving Forest

Whakapap

Mai Uta Ki Tai | Mountains to Sea





Towards A Thriving Forest

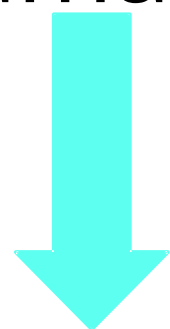
Kaupapa

Mai Uta Ki Tai | Mountains to Sea

Our kaupapa and vision is simple.

Mission

Restoring the mauri of the
Kaimai Mamaku ranges.



Vision

The Kaimai Mamaku

Governance Strategy

- Multiple long term integrated projects
- Restoration enabling iwi-hapū aspirations
- Monitoring and mātauranga
- Collaboration and knowledge sharing
- Long term funding & support

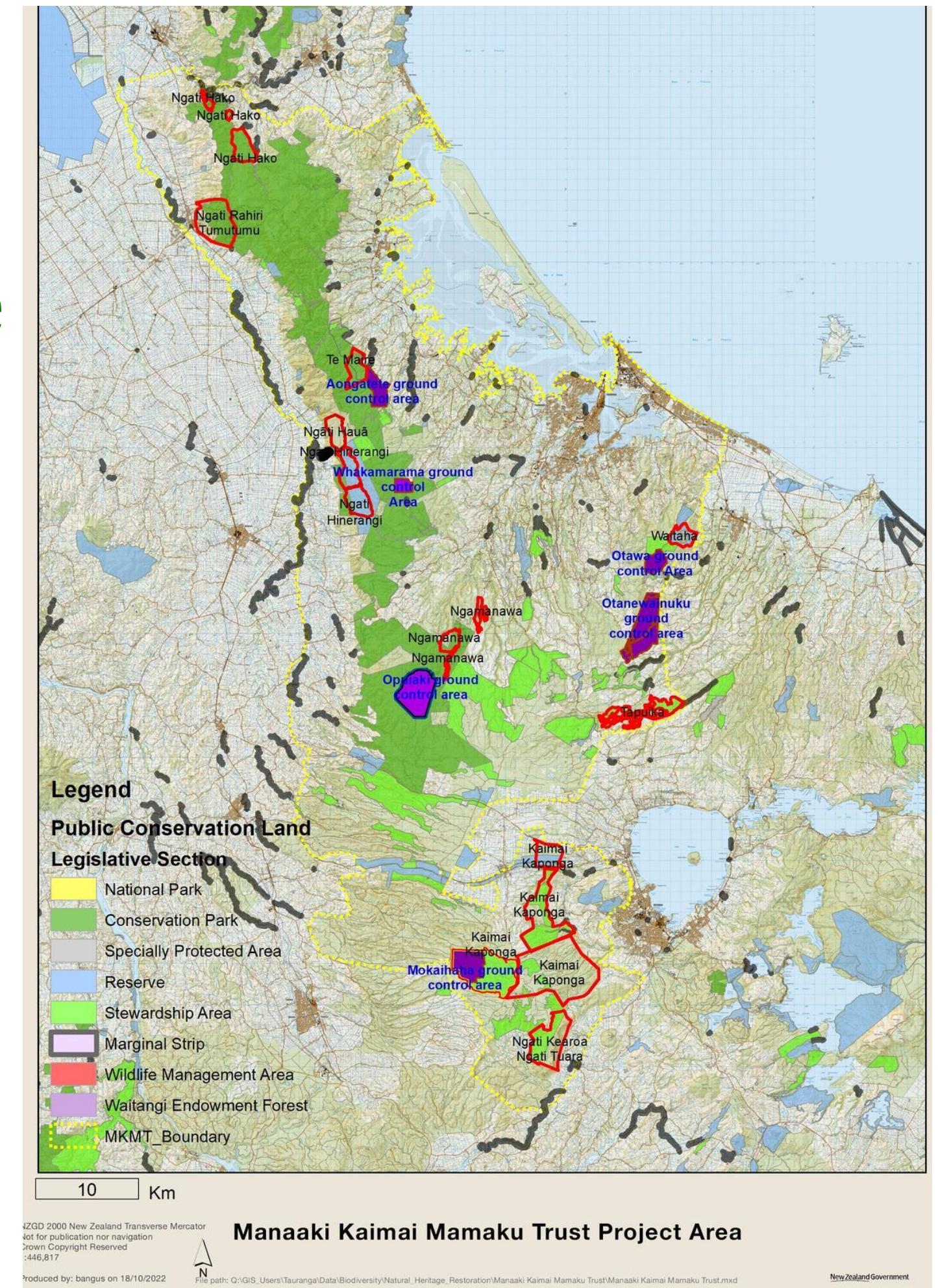
Operational Strategy

- Intensive sub-project support
- Data – collate, analyse, interpret
- Engagement – community, stakeholders, projects

Kaimai Mamaku Forum

Projects and Actions: Update

- Kaimai Mamaku Pest Management
- Projects that involve collaboration by connecting people and places
- Showcase the Kaimai Mamaku Ranges and Forum
- Information Collation and Mapping
- Research and Monitoring
- Communications, coordination and resourcing
- Strategic Planning and Influence



Forum Project 1: Kaimai Mamaku Pest Management

- 1.1 Contract Pest Management Specialist
- 1.2 Establish a pest control working group
- 1.3 Collate and map information
- 1.4 Issues & Options Report
- 1.5 Shortlisted Options
- 1.6 Engagement on Options
- 1.7 Pest Management Plan
- 1.8 Plan Implementation



Forum Project 2: Projects that involve collaboration by connecting people and places

2.1 Continued engagement within potential corridors/networks

2.2 Continued engagement with tangata whenua

2.3 Engagement with landowners adjacent to Kaimai Mamaku Ranges

2.4 Identify potential corridors/networks

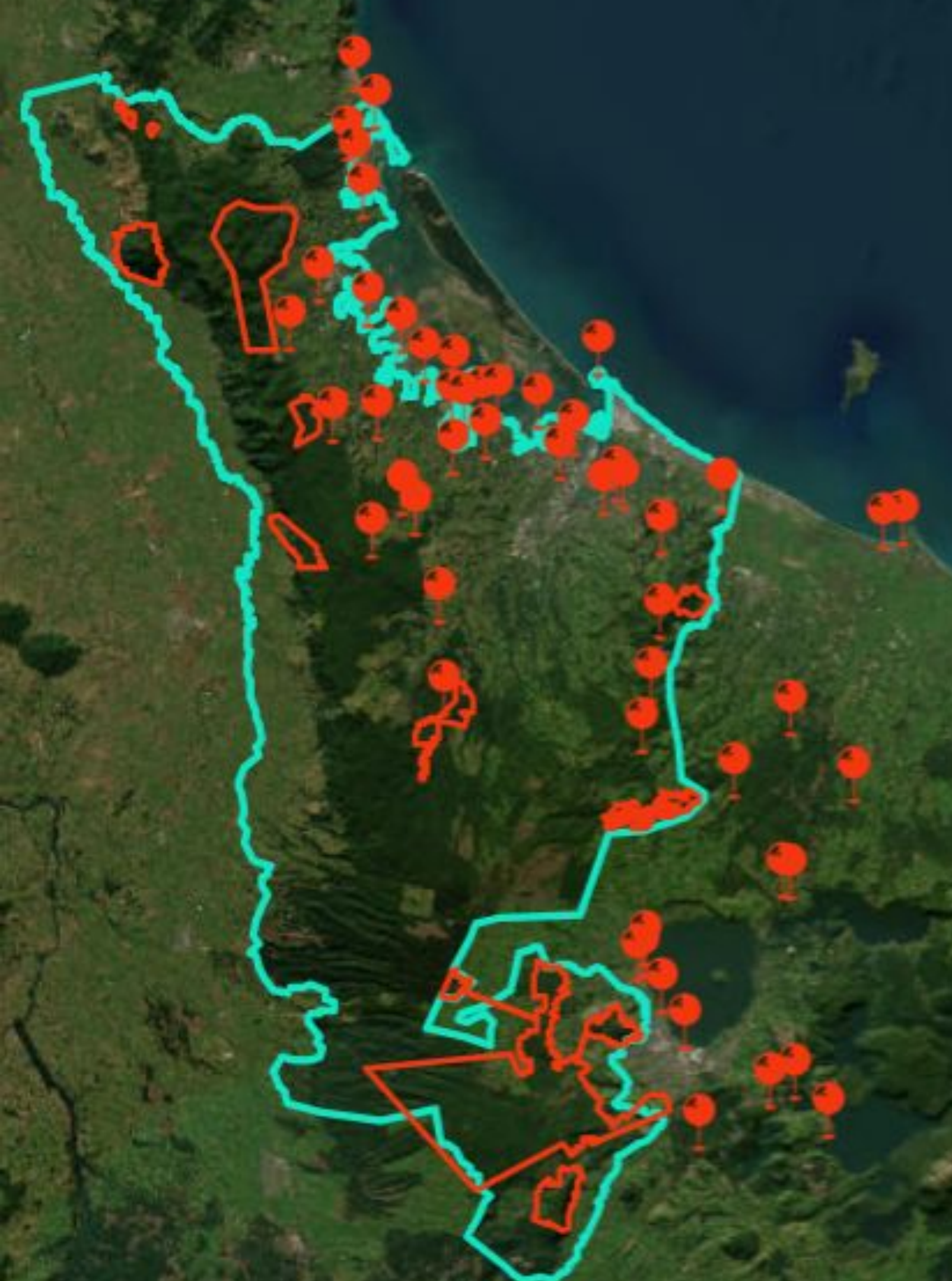
2.5 Connect people and projects within potential corridors/networks.





Forum Project 3: Showcase the Kaimai Mamaku Ranges and Forum

- 3.1 Connect local communities
- 3.2 Share information regionally and nationally
- 3.3 Annual presentation to elected members
- 3.4 Biennial Forum Symposium
- 3.5 Greater visual recognition



Forum Enabling Action 1: Information Collation and Mapping

I1 Collate information

I2 Map information

I3 Update/overhaul website

I4 Online dashboard

I5 Continue updating website



Forum Enabling Action 2: Research and Monitoring

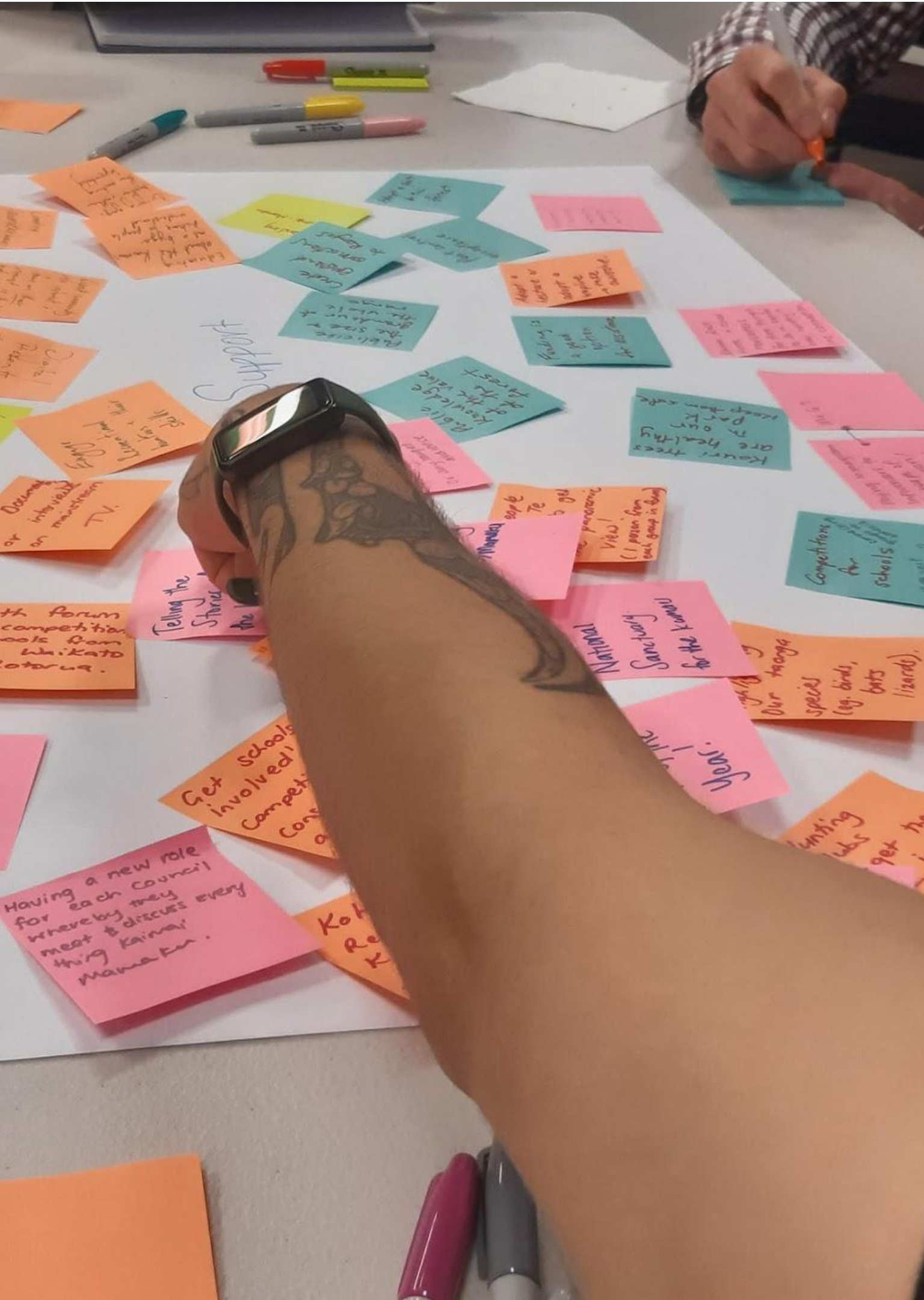
R1 Integrated monitoring programme

R2 Cultural health indicators

R3 Partnerships with others

R4 Support research and monitoring by others

R5 Updated SOE report



Forum Enabling Action 3: Communications, coordination and resourcing

C1 Forum mailing list

C2 Keep Forum members up to date

C3 Forum Coordinator role

C4 Funding calendar

C5 Funding options



Forum Enabling

Action 4:

Strategic Planning and Influence

S1 Forum Steering Group

S2 Review Forum Terms of Reference

S3 Identify ways to raise profile and influence

S4 Forum input / submissions

S5 Capacity building



Progress

Towards A Thriving Forest

Mai Uta Ki Tai | Mountains to Sea

- Two Stage 1 scoping projects
- Ten Stage 2 implementation projects
- Target pest animals: rats, feral cats, possums, wallabies, ungulates, stoats
- Target pest plants: wilding pines, wild ginger, climbing asparagus, Japanese honeysuckle, ivy
- Kauri disease advocacy
- Iwi-hapū engagement and collaboration
- Capability building: >90 people employed and trained, of whom 95% are Māori and whakapapa to the whenua
- Ongoing kaimahi training and knowledge sharing, formal and informal
- >8,000 traps/bait stations deployed to date along trap line networks
- >30,000ha in operational plans to be brought under control
- H&S plans and processes in place, SaferMe app



Towards A Thriving Forest

Mai Uta Ki Tai | Mountains to Sea

- 5 project teams supporting their community with flood response and emergency evacuation centers in marae during Cyclone Gabrielle. Community spirit at its finest.
- 1 new conservation art exhibition
- 2x Annual Kaimai Mamaku Kiwi Surveys
- 1,130 terrestrial invertebrate samples being collected and analysed to create an Invertebrate Community Indicator Protocol.
- 27 catchments to be surveyed with eDNA thanks to Environmental Protection Authority NZ and Wilderlab NZ Ltd
- 3 mātauranga tools being trialed for tohu of forest health along with 1 cultural monitoring framework under development and 1 cultural monitoring plan in operation.



Support

Towards A Thriving Forest

Mai Uta Ki Tai | Mountains to Sea

JOBS | MAHI
FOR NATURE | MŌ TE TAIAO

